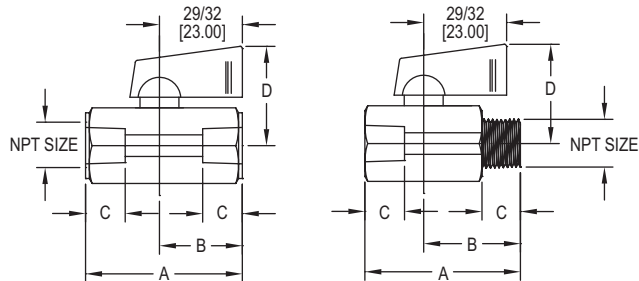


# MINI STAINLESS STEEL BALL VALVE

Economical, Wide Chemical Compatibility, Compact



Female X female connection  
SMV2-WFX

Male X female connection  
SMV2-WMX

The **Series SMV2 Mini Stainless Steel Ball Valve** is ideal for small, confined spaces, where larger valves are unsuitable. The 316 SS and PTFE wetted materials are excellent for applications with corrosive media. The handles are made of a rigid nylon for extended durability. Installation is made easy with a choice of FxF or MxF process connections. PTFE ball seats provide broad media compatibility and bubble tight shutoff.

#### FEATURES/BENEFITS

- High working pressure
- Abrasion resistant
- Easy to install
- Economical
- Wide chemical compatibility

#### APPLICATIONS

- Gas or liquid flow control
- Ideal for small, confined spaces

#### SPECIFICATIONS

**Service:** Gases and liquids compatible with wetted materials. Not rated for steam use.

**End Connections:** NPT, see model chart.

**Pressure Limits:** 1/8" to 3/8", 1000 psi (68.9 bar) WOG; 1/2", 800 psi (51.1 bar) WOG.

**Temperature Limits:** 212°F (100°C) maximum.

**Wetted Materials:** Valve body: Cast 316 SS (CF8M); Valve ball, insert and stem: 316 SS; Ball seat: PTFE.

**Agency Approvals:** Meets the technical requirements of EU Directive 2011/65/EU (RoHS II).

#### MODEL CHART

| Pipe Size | Female x Female Model | Male x Female Model |
|-----------|-----------------------|---------------------|
| 1/8"      | SMV2-WF1              | SMV2-WM1            |
| 1/4"      | SMV2-WF2              | SMV2-WM2            |
| 3/8"      | SMV2-WF3              | SMV2-WM3            |
| 1/2"      | SMV2-WF4              | SMV2-WM4            |